

Corporate PR



Pre-Planning Consultation



Project PR



Community Engagement



Business Development



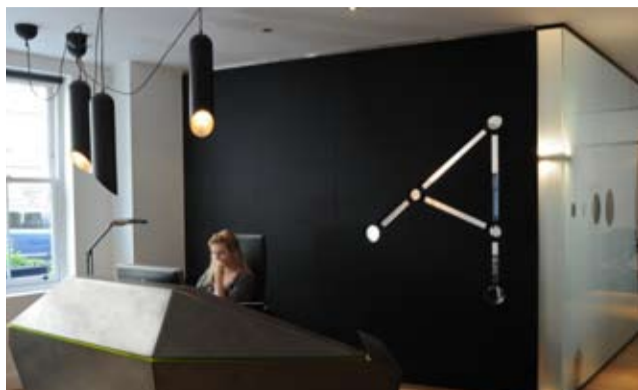
“ Relationship management. A term overused but perhaps essential in today’s market? Whether driven by chemistry or performance, trust is still fundamental in every relationship. As consultants, we may have to work harder, for longer and sometimes for less. But, as long as they are built on trust, business relationships will survive and flourish. With or without management. ”

Martin Winch, CEO, M&N Communications

One to Watch – Dovehouse Interiors

M&N has recently been appointed to manage corporate communications for Dovehouse Interiors.

Dovehouse is a specialist fit-out contractor in London and the South of England. Established in 2002, the practice carries out property refurbishments, renovations and fit-outs across all sectors: residential, office, education, healthcare and commercial.



M&N will be providing communications expertise across media relations, digital and B2B marketing platforms. A key component of our strategy will be to put the spotlight on the practice’s expertise, and profile some of its key projects, such as the bespoke NHS health centres and Primary Care Trusts across London, and the retro style library refurbishment at the University of Sussex, Brighton.

Dovehouse is also the practice responsible for the interior fit-out of Almacanter’s HQ in Quebec Mews, London (pictured).

Core Blimey!

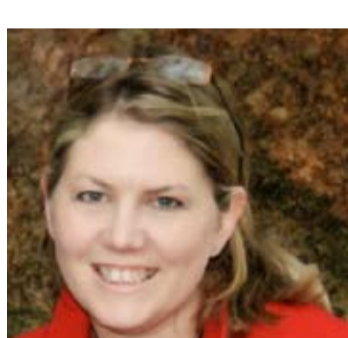
Leading property company Core has appointed M&N to manage its corporate communications and assist with strategic marketing activity. The team will be working with Core to promote its extensive central London portfolio of high profile buildings and its development, refurbishment and asset management activities.



Luxury Living on Park Lane

The Grosvenor House Apartments, Park Lane, is due open at the end of the year after a £100m refurbishment project. This new apart-hotel, which has breathtaking views of Hyde Park from this prime address in central Mayfair, defines luxury, quality of service and attention to every possible detail.

M&N has handled the communications for the project since its conception, providing marketing, media relations and crisis management support, and we are now looking forward to supporting the launch. The project is being delivered by KRM Construction Services for Park Lane Properties Ltd and when launched will rank among the most lavish apart-hotel accommodation in London.



Cllr Kinnes is Born!

M&N’s very own Katie Kinnes was recently elected as one of nine Councillors for the Albury Parish Council (APC) in the Surrey Hills. Katie is excited about her new position with APC, “I am a strong believer that you get out, what you put in to your local community and since moving to Albury Village five years ago, I have participated in many local activities and being a Councillor just takes this to the next level. As my work with M&N involves working with stakeholders across the country and engaging with people at all levels from politicians to pub landlords as well as keeping abreast of the Localism Bill and the issues affecting local communities, I feel I have a different dimension to bring to Albury Parish Council.”



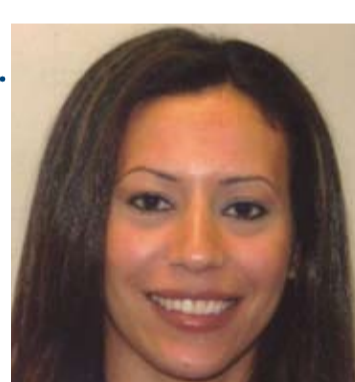
Abbey Wood Win

Berkshire Investment Capital and Development Securities has recently appointed M&N to carry out a pre-planning consultation programme on a site in Abbey Wood, Greenwich. The consultation process will begin in the coming weeks. This project expands on M&N’s extensive experience in Greenwich, where we have worked on four phases of Berkeley’s Kidbrooke Regeneration since 2007.

Abu Dhabi News

M&N Appoints New Associate Director

M&N welcomes Radwa Allabban as Associate Director of our Abu Dhabi office. With over 12 years industry experience, Radwa has a solid international client-side and top-agency experience gained in the UK, MENA and Far East markets, combined with an extensive property clients portfolio, which includes Mubadala Real Estate and Hospitality, Dubai Properties, Harrods Estates and DTZ. She is fluent in both English and Arabic.



Al Bateen School Welcomes Students



The new Al Bateen School, built by M&N’s client Wates International, in a joint venture with Al Fara’a, has just opened its doors to students in early September. The secondary school features a magnificent central courtyard shaded by a translucent roof and surrounded by water fountains, perfect for an outdoor lecture. The state-of-the-art school also has an indoor swimming pool, music and dance studios, an 850-seat auditorium and plenty of sport facilities to satisfy ambitious and creative students.

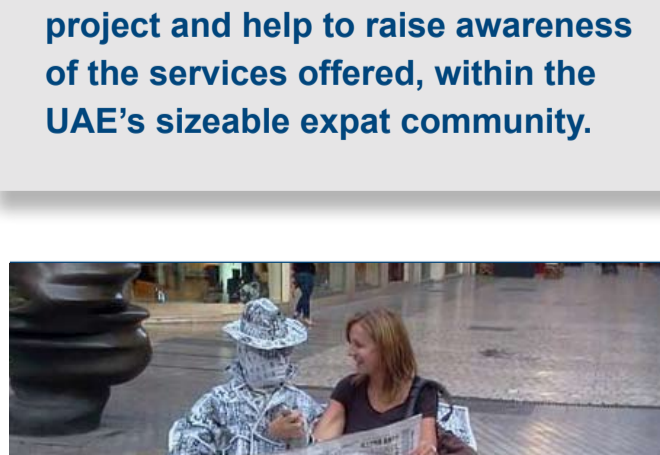
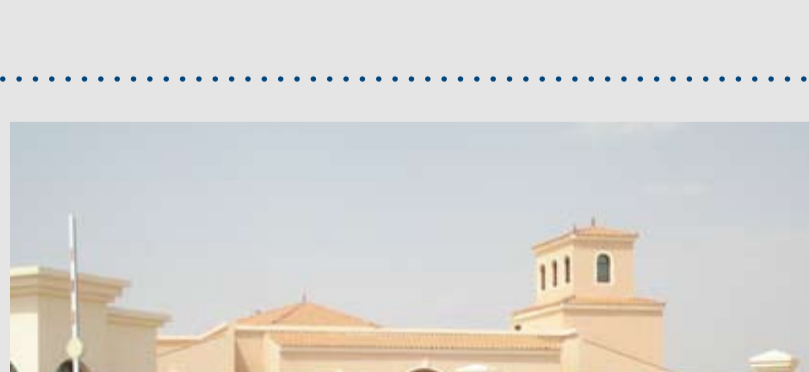
BKF Discusses Culture



The ‘Building Knowledge Forum’ (BKF), a monthly event series hosted by Allies & Morrison and M&N recently gathered to discuss ‘Our Heritage: Learning from the Past’. The well attended event was facilitated by Dr. Mark Beech, Cultural Landscapes Manager at the Abu Dhabi Authority for Culture and Heritage (ADACH). The exciting and enlightening discussion included topics ranging from tangibility and intangible heritage to authenticity and how it affects life around us, including the built environment.

A ‘First’ for the UAE

M&N has been appointed to provide all strategic communications support for the launch of the UAE’s first crematorium in Al Ain. M&N will sensitively handle communications around the diverse cultural and religious issues faced by this project and help to raise awareness of the services offered, within the UAE’s sizeable expat community.



Caption Competition

Now for a bit of fun, send us your best caption for this photo and be eligible to win a dinner voucher to a popular restaurant in the UK or Abu Dhabi courtesy of M&N. We’re looking for something creative and witty. Good luck! Send your captions to teena@mncommunications.ae

M&N Communications Limited

36-40 York Way

Kings Cross

London

N1 9AB

T: +44 (0)20 7760 7529

E: n.winch@mncommunications.co.uk

M&N Communications Limited

Blue Building, TwoFour54

PO Box 77780

Abu Dhabi

UAE

T: +971 (0)2 401 2645

E: m.winch@mncommunications.ae